

## FEATURES & SPECIFICATIONS

Cf technical datasheet 358



**Viscosity sensor**

Full Scale Range: 5000 cP\*

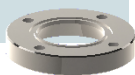
Temperature: up to 75°C\*

Ex-proof certification

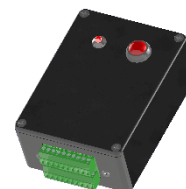
Material: 316L SS

Ingress Protection: IP67

With 316L SS Weld-mount flange



\*Other available on demand



**Electronic interface**

Viscosity and temperature transmitter

1 x RS485 output

2 x 4-20 mA outputs

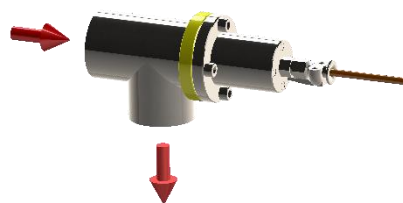
DIN rail mounting

Operating temperature: 0-40°C

## MAIN MOUNTINGS



On preparation tank wall



On pipe angle

**Any questions or specific needs regarding other viscosity solutions?**  
**Let us help you find the best match for your process by **contacting us** at:**  
**[instruments@sofraser.com](mailto:instruments@sofraser.com)**